

Turner PRO

etac®

EN - User manual

IT - Manual utente

DE - Gebrauchsanweisung

FR - Manual d'utilisation

NO - Brukermanual

ES - Manual de usuario

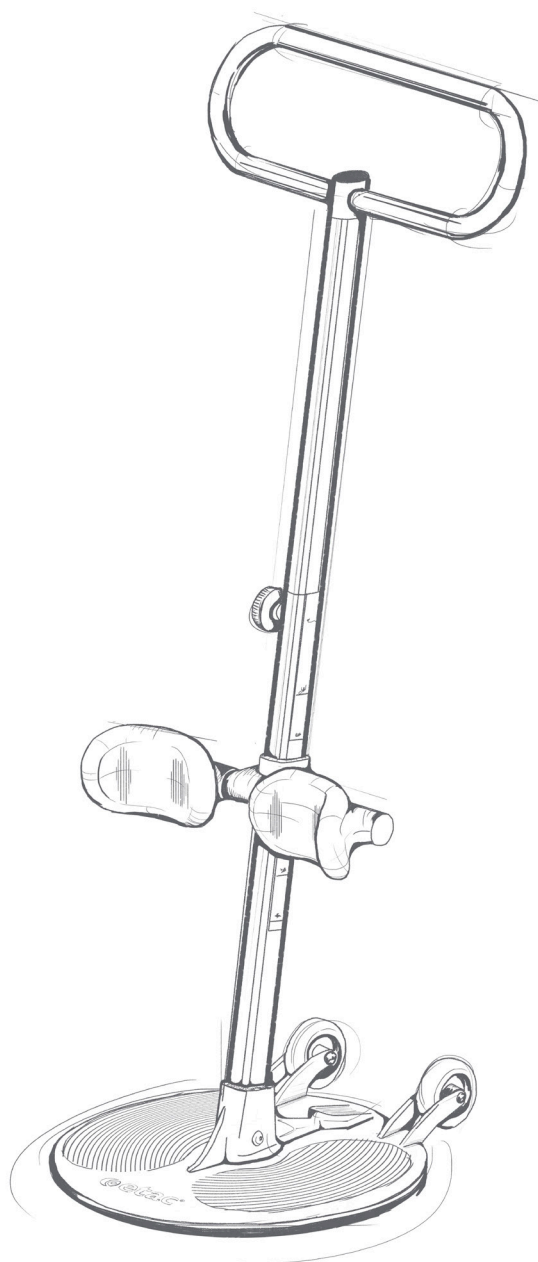
SV - Bruksanvisning

NL - Handleiding

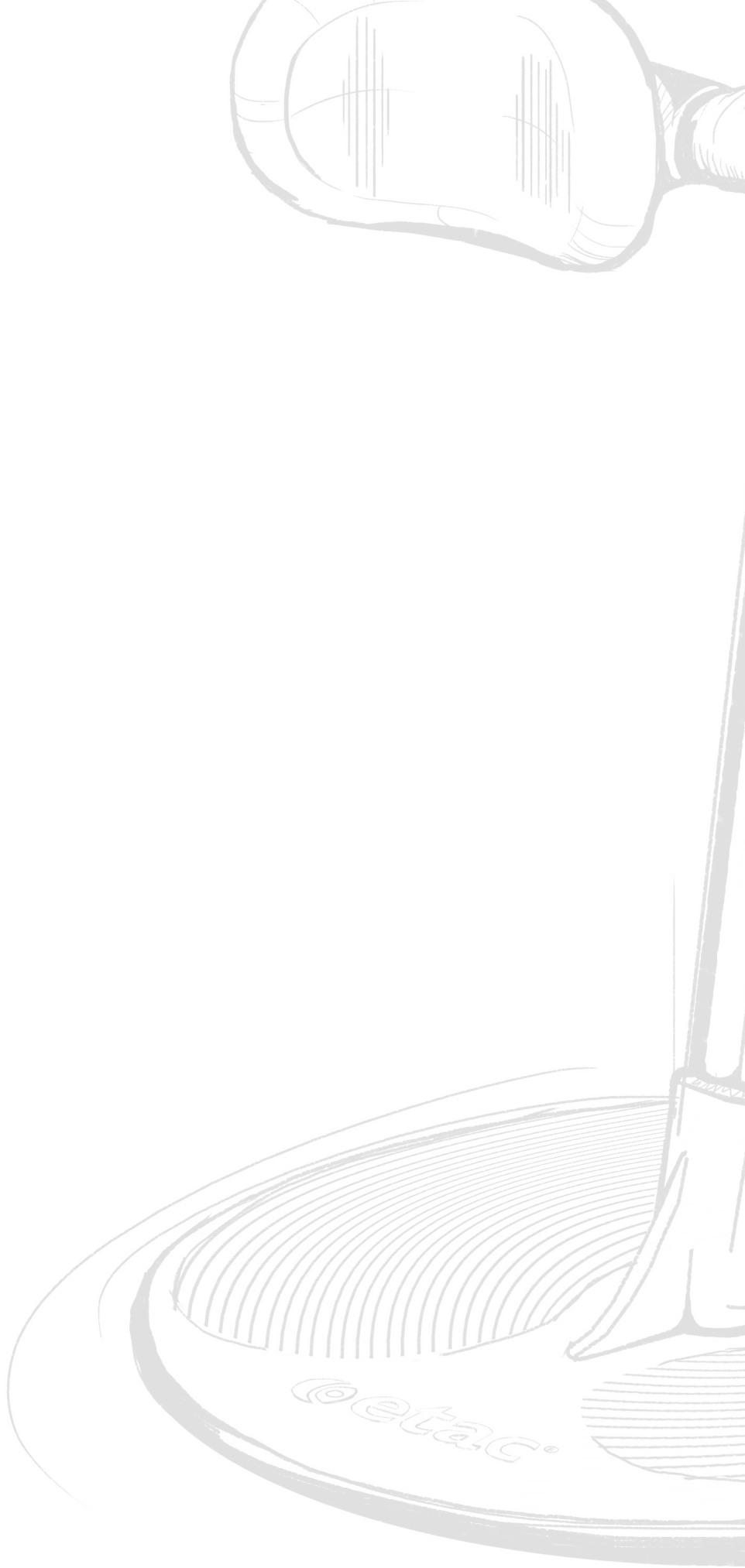
FI - Käyttöohje

DK - Brugsvejledning

BM61099 Rev G 2021-12-29



MD
CE





Contents

User manual - English - 4
Bruksanvisning - Svenska - 8
Brukermanual - Norsk - 12
Brugsvejledning - Dansk - 16
Käyttöohje - Suomi - 20
Gebrauchsanweisung - Deutsch - 24
Handleiding - Nederlands - 28
Manual d'utilisation - Français - 32
Manual utente - Italiano - 36
Manual de usuario - Español - 40

General

CE declaration



The product, and its related accessories, described in this instruction for use (IFU), is in compliance with the regulation (EU) 2017/745 of 5. April 2017 – as a medical device, risk class I. The product is manufactured and tested according to EN 12182:2012 and selected parts of EN/ISO 10535:2006. Any serious incident that occurs in relation to the device should be reported to the manufacturer and the competent authority of the Member State in which the user and/or patient is established.

Conditions for Use:

Transferring a person may pose an element of risk. Only trained personnel should use the equipment covered by this user manual.

Warranty notice

Two-year warranty against defects in workmanship and materials of our products.

Please refer to www.etac.com for terms and conditions.

Visit www.etac.com to download the latest version of our documentation.

Important

This User Manual contains important safety instructions and information regarding the use of the Turner PRO and accessories. In this manual the user is the person being transferred. The assistant is the person operating the Turner PRO.



This symbol indicates important information related to safety. Follow these instructions carefully.



Read User Manual before use!
It is important to fully understand the content of the user manual before attempting to use the equipment.

Modifications and use of components made by other manufacturers:

We recommend only using Etac components and spare parts. Declaration of conformity is not valid and Etac is not responsible for warranty if any modifications are made to the product. Etac shall not be liable for faults or accidents that can occur when using components made by other manufacturers.

Risk assessment

Assess the risk and take notes.

You as the assistant are responsible for the safety of the user!



Only technical personnel are allowed to perform repairs.

Labels and symbols

Product label:

The label contains art. number and serial number (bar codes). The EAN code contains;

(01) (EAN no.): xxxxxxxxxxxxxx

(11) (Batch): YYMMDD

(21) (Serial number): xxxxx

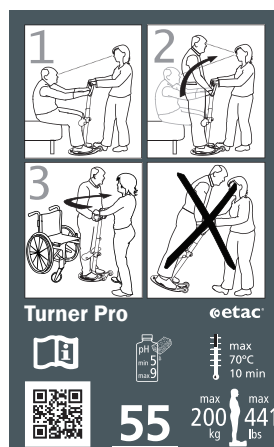


Symbols:

Symbols used on the product, explained in more detail:

- Manufacturer
- Date of manufacture
- Catalogue number
- Serial number
- Medical Device
- CE marked
- Refer to user manual
- Max temperature when washing
- Max user weight (SWL)
- pH when washing
- QR code

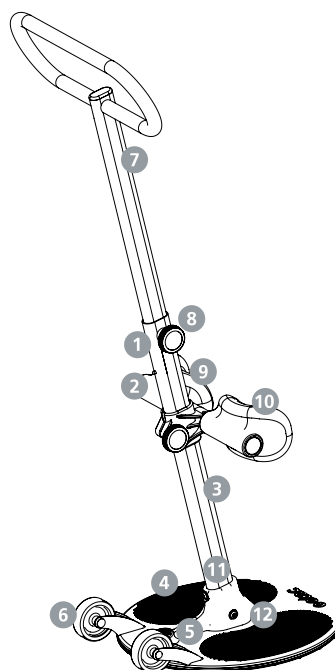
Short user guide:



Turner PRO - intended use

Turner Pro is a sit-to-stand transfer aid that makes it easier for a carer to help a user to stand and transfer him/her to another sitting position. Users must be able to grip and pull up their own body weight, but still require support/help to stand up and be turned. The purpose is to transfer a person from/to bed, chair, wheelchair or toilet. The Turner PRO is lightweight and easy to move around. The Turner PRO should only be used indoor on flat surfaces.

Turner PRO



1. Outer pole
2. Lock pin
3. Height label
4. Main plate
5. Assistant footrest
6. Transport wheels
7. Inner pole with handle
8. Turning knob
9. Short user guide
10. Leg support
11. Product label
12. Bolts